



CONTINUOUS AND ACCURATE MEASUREMENT
RESISTANT TO SHOCKS AND VIBRATIONS
WIDE MEASURING RANGE

The ERI is a telescopic extensometer used to measure longitudinal displacements and axial deformations over long base lengths.

Description

The fill extensometer Model **ERI** consists of a telescopic outer PVC pipe fitted with two end flanges and an inner stainless steel rod. One end of the rod is attached to a flange, while the other end of the rod is attached to a displacement sensor, which is attached to the other flange. A signal cable attached to the sensor links the sensor to a readout at the surface.

As displacement occurs, the telescoping outer pipe moves with the soil, causing the rod to compress or extend the displacement sensor.

These fill extensometers are generally installed horizontally in trenches, but sometimes vertically in boreholes.

The standard lengths of the fill extensometer Model **ERI** are between 3 meters and 6 meters. Extensometers can be assembled in series using threaded rods inserted in the holes on each end flange.

Key Features

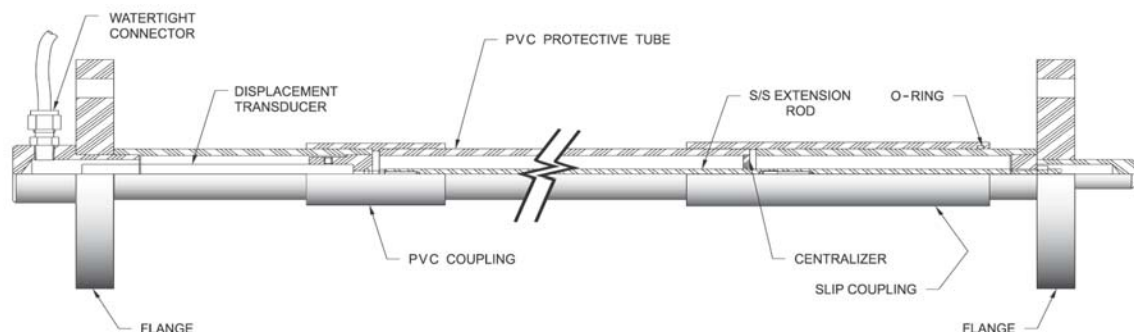
- High resolution
- Wide measuring range
- Rugged: Materials resistant to shocks and vibrations caused by explosions and earthquakes
- Easy installation and maintenance
- Continuous and accurate measurement of displacements and axial deformations over long base lengths
- Frequency signal (from vibrating wire sensors) easy to process and transmit over long distances

Applications

- Monitoring the crest of earthfill dams to locate tension cracks
- Measuring lateral strains in earth structures
- Measuring heave in the base of deep excavations

Specifications

Range	25, 100, 150, 200 and 300 mm
Sensor type	Vibrating wire
Accuracy	±0.25% F.S.
Resolution	0.02% F.S. (MB-3TL)
Cable	IRC-41A(P), IRC-390
Thermistor (optional)	3kΩ
Operating temperature	-20 to +80°C
Base length	3m (longer upon request)
Outside diameter	
Stainless steel extension rod	6.35 mm
End flange	150 mm
PVC telescoping coupling	42 mm
PVC sensor housing	48 mm
PVC casing	33 mm
Readout unit	MB-3TL
Data acquisition system	SENSLOG



Ordering Information

Please specify:

- Base length and range
- Electrical cable length

Optional Accessories

- 1m rod and tube Readout instruments
- Readout instruments